

CASE STYLES

OUTLINE DIMENSIONS (inch/mm)

case no.	A	B	C	D	E	F	G	H	J	K	L	M	N	P	Q	R	S	T	wt. grams.	NOTES*
CJ608	.360 9.14	.400 10.16	.29 7.37	.120 3.04	.155 3.94	.050 1.27	.100 2.54	.030 0.76	.065 1.65	.060 1.52	.420 10.67								.40	A23, F42
CJ725	.360 9.14	.400 10.16	.29 7.37	.120 3.05	.215 5.46	.050 1.27	.100 2.54	.040 1.02	.065 1.65	.060 1.52	.420 10.67								.45	A23, F42
CK605	.500 12.70	.500 12.70	.180 4.57	.100 2.54	.080 2.03	.115 2.92	.060 1.52	.040 1.02	.540 13.72	.060 1.52	.100 2.54	.135 3.45	.135 3.45	.115 2.92	.140 3.56	.070 1.78	.150 3.81	.070 1.78	1.0	A31, F37
CL620	.154 3.91	.340 8.64	.068 1.73	.236 5.99	—	.050 1.27	.016 0.41	.008 0.20	.010 0.25	.032 0.81	.059 1.50	.095 2.41	.028 0.71	.287 7.29					.14	A13, F43
CM624	.295 7.49	.405 10.29	.095 2.41	.406 10.31	—	.050 1.27	.016 0.41	.008 0.20	.004 0.10	.032 0.81	.091 2.31	.102 2.59	.028 0.71	.460 11.68	—	.130 3.30	.340 8.64		0.67	A13, F44
CP641	4.75 120.65	4.375 111.13	4.11 104.39	1.540 39.12	2.00 50.80	3.36 85.34	.144 3.66	4.24 107.70	1.12 28.45	.58 14.73	.125 3.18	2.38 60.45	1.50 38.10	1.00 25.40	.50 12.70	.34 8.64	.19 4.83	.23 5.84	850	A7, D17
CV665	1.61 40.89	4.00 101.6	1.20 30.48	.45 11.43	1.33 33.78	.35 8.89	.161 4.09	3.560 90.42	.880 22.35	.36 9.14	.22 5.59	.44 11.18	1.56 39.62	1.06 26.92	.80 20.32	3.12 79.25	.06 1.52	.59 14.99	250.0	A4, D28
CW686	1.77 44.96	2.42 61.47	.55 13.97	.13 3.30	.12 3.05	2.165 55.00	1.535 39.00	.126 3.20	.22 5.59	.28 7.11	.51 12.95	.61 15.46	.39 9.91						71	A4, D17
CY353	3.24 82.30	2.00 50.80	1.50 38.10	.62 15.75	.31 7.87	2.620 66.55	.75 19.05	.62 15.75	.250 6.35	.25 6.35	.50 12.70	.31 7.87	.50 12.70	1.00 25.40	.13 3.30				.65	A4, A18, D6

tolerance .x±.1 .xx±.03 .xxx±.015 inch

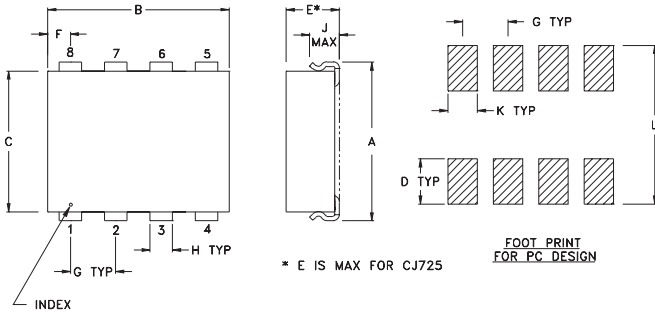
oz. = grams x.0353

* NOTES:

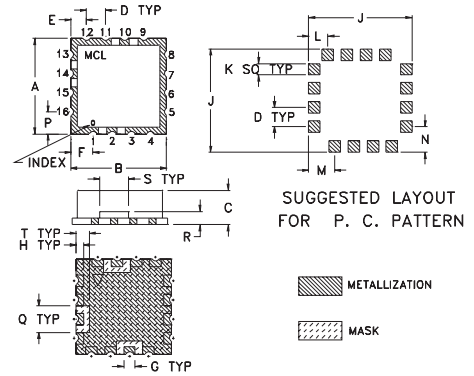
- A. MATERIAL AND FINISH
 A4. Case material: aluminum alloy. finish: irridite per MIL-C-5541
 A7. Case material: aluminum alloy. finish: case black paint; Heat sink: black anodize; base plate irridite per MIL-C-5541.
 A13. Case material: plastic. Lead Finish: tin-lead plate.
 A18. Mounting bracket finish: irridite or clear anodize.
 A23. Case material: plastic. Lead Finish: solder plate.
 A31. Case material: Brass alloy, tin plated. Header: G-10 base. Termination finish: solder plate.
- D. CONNECTORS
 D6. Connectors: female SMA only. Male SMA available on request, consult factory.
 D11. Connectors: Please specify; Type N or SMA.
 D17. Connectors: Female SMA only.
 D28. Connectors: Female SMA standard. For other connectors consult factory.
- F. PACKAGING
 F1-45. Tape and reel packaging available. See Tape and Reel Packaging Information for details. To order Tape & Reel version add -TR suffix to model.

OUTLINE DRAWINGS

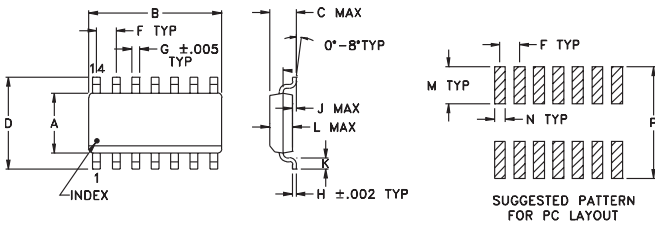
CJ



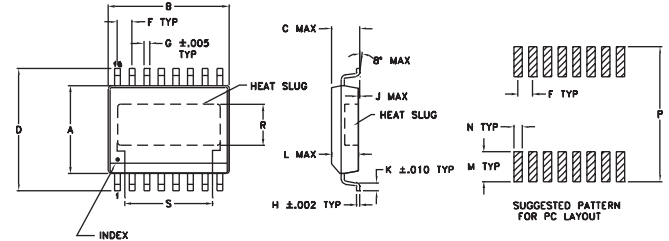
CK



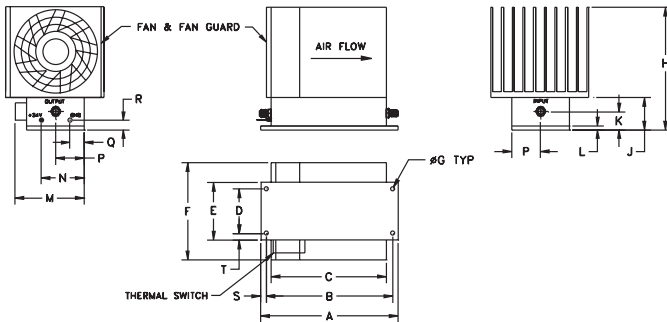
CL



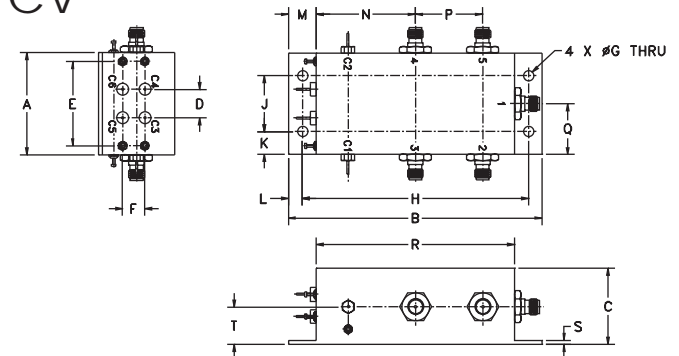
CM



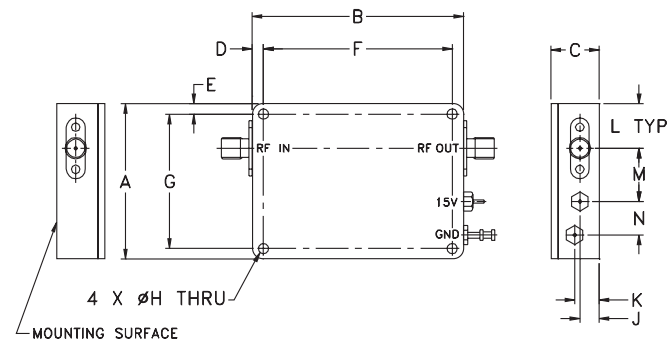
CP



CV



CW



CY

